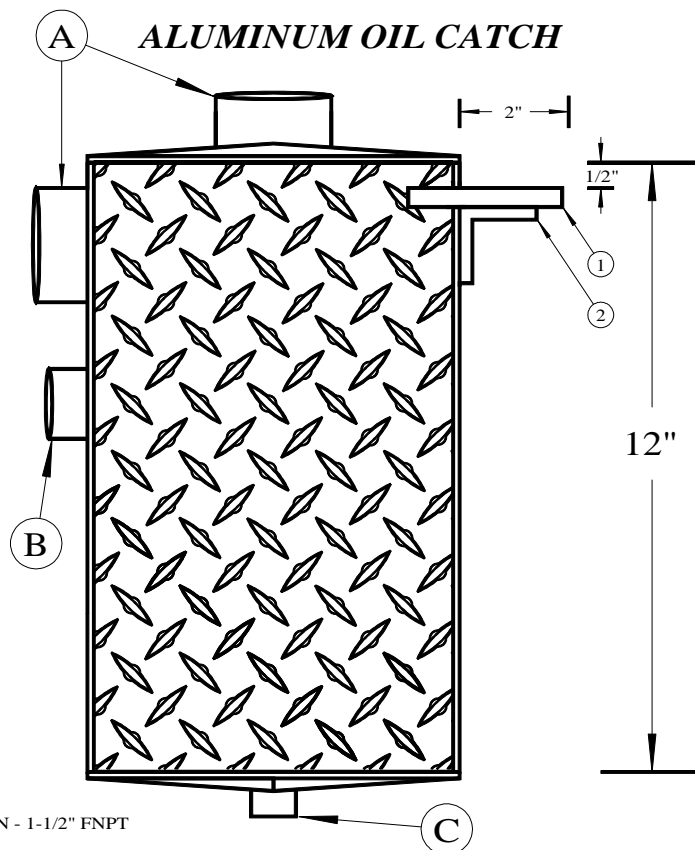
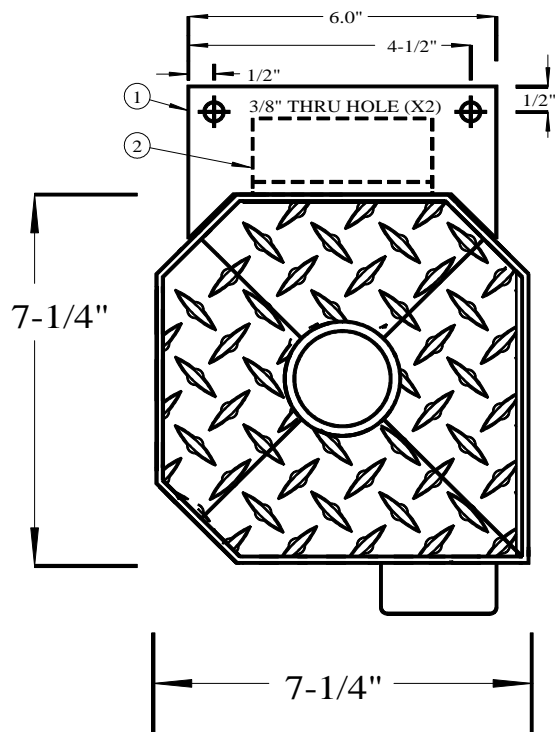


Dimensions

Part No. MF0C3612

- ① BRACKET MATERIAL - 3/8" X 3" ALUM. (6" LGTH)
- ② BRACKET BRACE - 1-1/2" ALUM. ANGLE X 1/4" THK (3-1/2" LG...)



- Ⓐ OIL CATCH INLET AND OUTLET CONNECTION - 1-1/2" FNPT
- Ⓑ PRESSURE VENT CONNECTION - 3/4" FNPT *****
- Ⓒ DRAIN CONNECTION 1/2" FNPT

***** FOR USE WITH CONDE HD (VACUUM PRESSURE) MODELS
VACUUM ONLY MODELS - PLUG 3/4" FNPT CONNECTION

Conde' Pumps

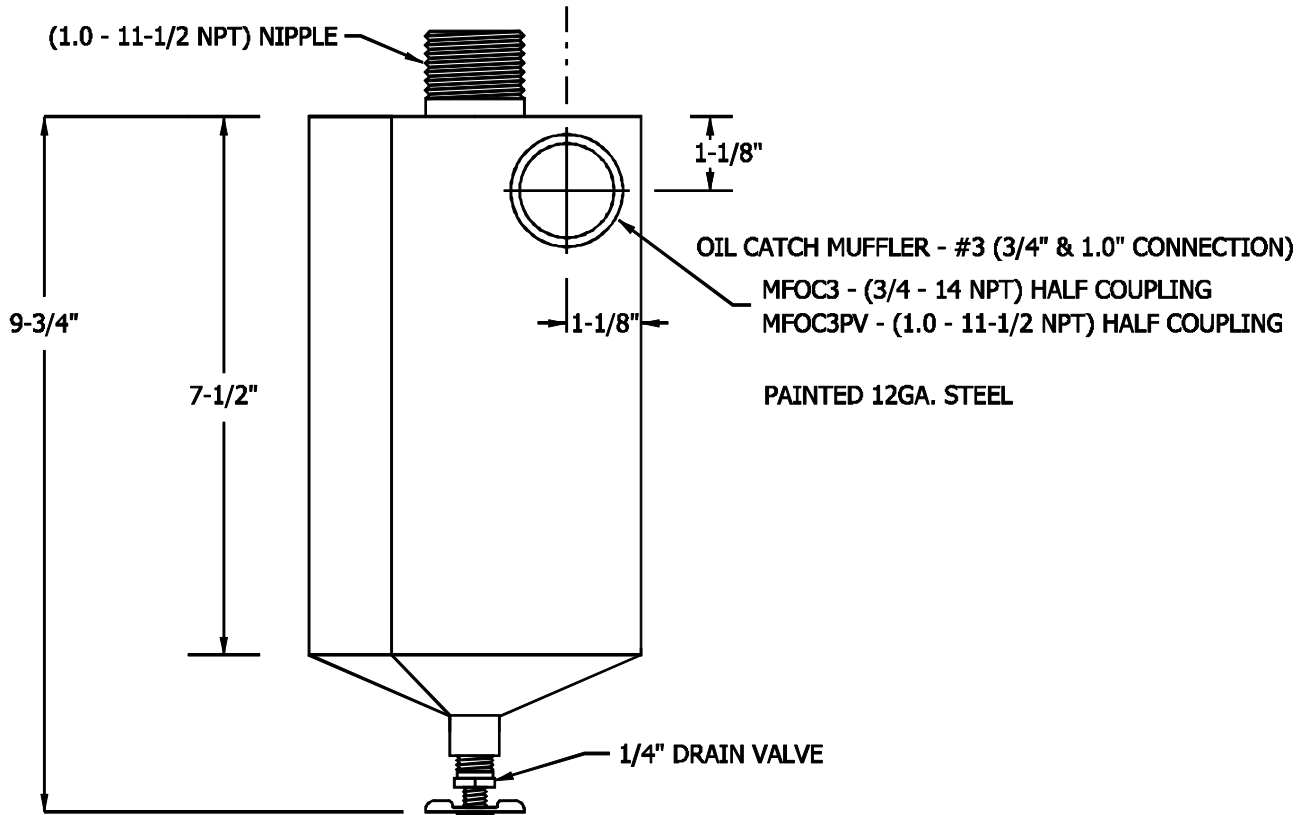
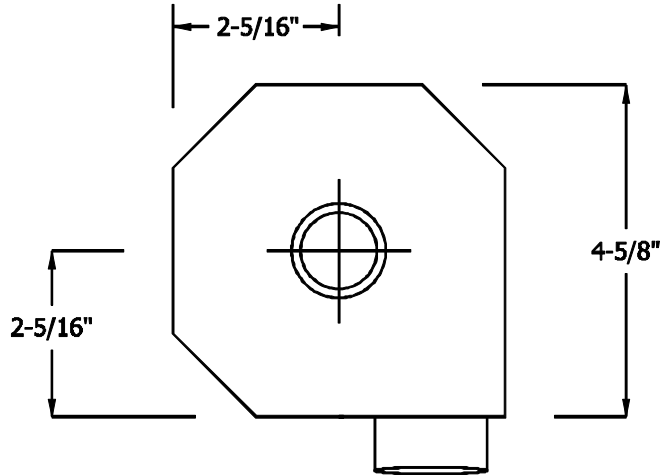
Westmoor Ltd.

Phone: 800-367-0972, 315-363-1500

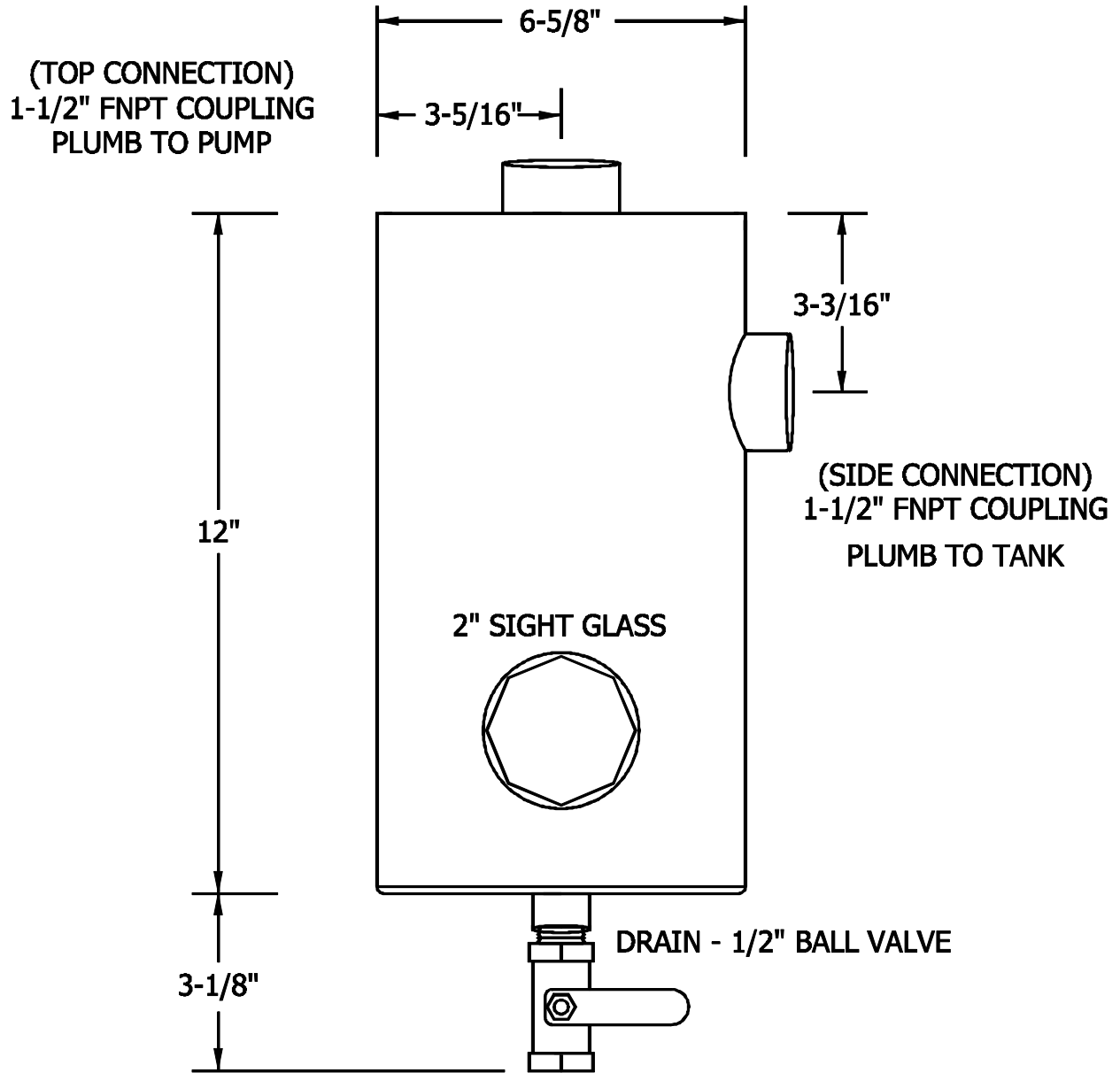
Fax: 315-363-0193

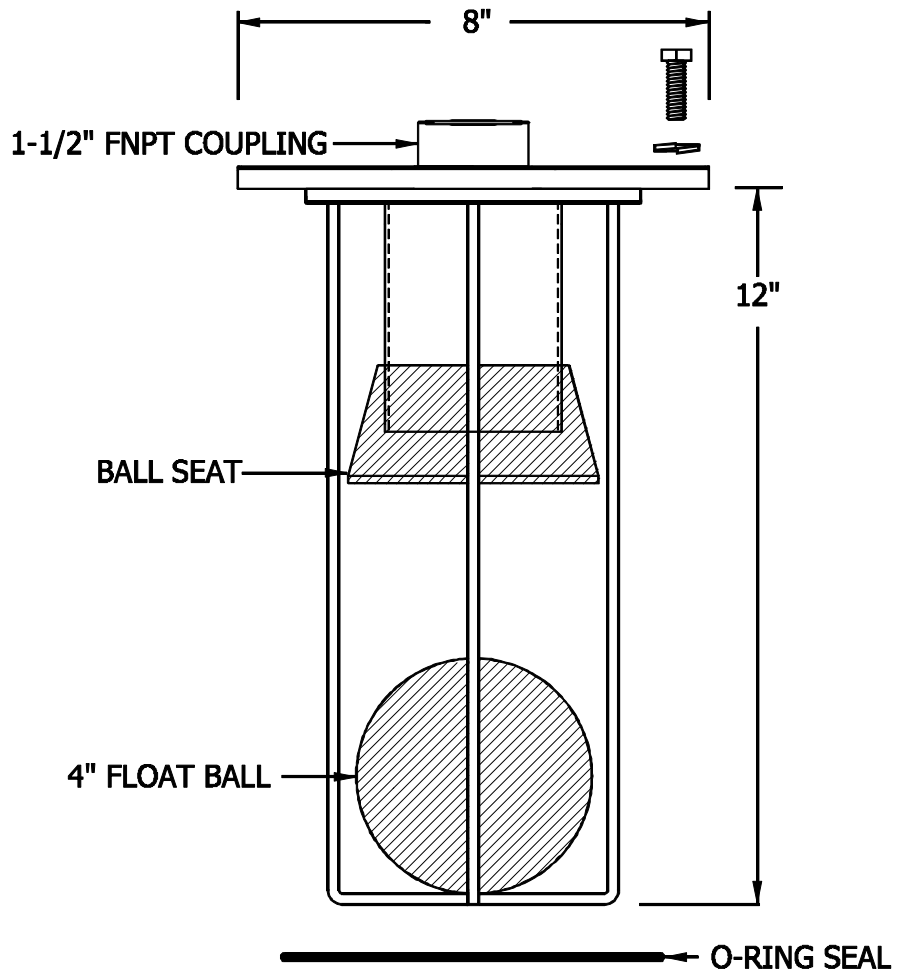
E-Mail: pumps@westmoorltd.com

906 West Hamilton Ave.
P.O. Box 99
Sherrill, New York 13461

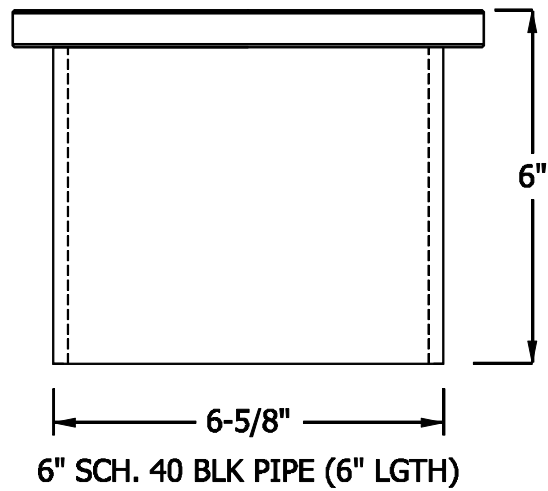


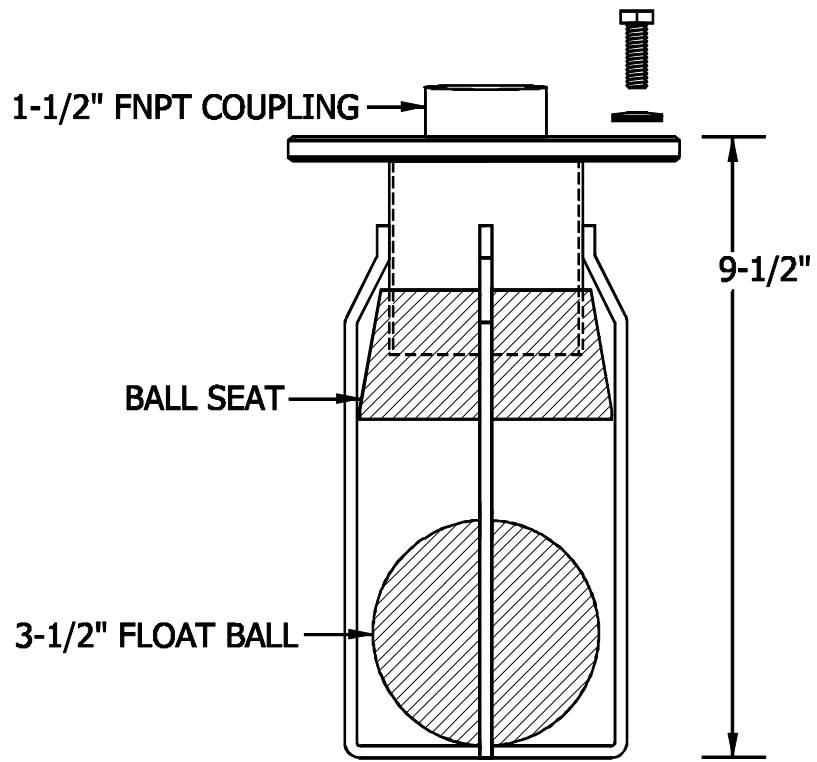
LWTRM01SS
1-1/2" STAINLESS STEEL SECONDARY MOISURE TRAP





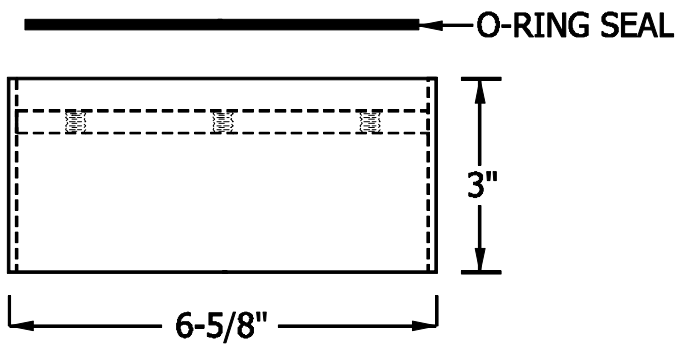
LWTRP02
1-1/2" (STEEL) PRIMARY





LWTRP01
 1-1/2" (ALUMINUM PRIMARY)

LWTRP03
 1-1/2" (STAINLESS STEEL PRIMARY)



LWTR31
MINI - 3" X 1" PRIMARY TRAP

