

Darkroom



Imaging



www.darkroomimaging.com

- ▶ Full service Pro photo lab
- ▶ On-Line ordering 24/7



1-800-566-9504

315-336-9152



2019 catalog index

1. General Information	2-4
2. Film Processing	6
3. Prints from Film	6
4. Proofs from digital files	7
5. Metallic & Canvas Paper	9
6. Specialty Items	9
7. Digital Printing	8
8. Special Occasion Cards	7
9. Lab Prints & FTP Software	13
10. Online Gallery	14
11. Laminating	13
12. Mounting	10
13. Sports-Events	11
14. Scanning Services	12
15. Proof Pages	14
16. Photo Books	15
20. Other Services	16
Retouching	
21. Stand-Outs Mounting	17
22. Wedding Albums	18-19

CONTACT:

Darkroom Imaging

voice: 1-800-566-9504 315-336-9152

fax 315-339-1994

Email: info@darkroomunltd.com

Business Hours:

M-F 9:00 am-6:00 pm e.s.t.

Our Mission

To provide optical and digital photographic services of high quality and reasonable price for the professional, scientific and commercial trade.

Company Profile

Darkroom Imaging will work with you to make your photo needs and projects a success. We are easy to communicate with and understand the photographer's needs. We work with portrait, commercial and aerial photographers, government and police agencies, research and production facilities.

Started in 1982 as a custom photo lab for the local trade, we now have customers in all 50 states as well as Canada and overseas. We are a friendly lab, do business on a first name basis, and enjoy our work.

All **Darkroom Imaging** associates are well experienced and have photo degrees and/or experience in wedding or commercial photography. The founder, Alex Zaleski, has been active in photography for over 51 years. We are constantly upgrading to keep pace with the changing world of the photographic imaging trade.

Location

Darkroom Imaging is located at 418 W. Dominick St., Rome NY. For out-of-town folks who are wondering where Rome is...we are located in Upstate New York in the Mohawk Valley at the foothills of the Adirondack Park, one of the nation's largest wilderness preserves. Rome is the home of Fort Stanwix where a pivotal battle was fought in the Revolutionary War. Griffiss Technology Park, formerly Griffiss Air Force Base and former home for the 416th bombardment wing, is a close neighbor. Rome Labs, a premiere Air Force research facility, now anchors the park and draws a number of high tech support and research companies.

Affiliations

Member of Photo Marketing Association International, Rome Chamber of Commerce, Association of Professional Color Imagers, and Digital Imaging Marketing Association.

We are not responsible for typographical errors.

Prices are subject to change without prior notification. Updated 05/10/2018

GENERAL INFORMATION

Shipping to the Lab

For your convenience we supply mailing materials, such as envelopes for cut negatives and mailer boxes for film. Please include a work order with each package so we can better serve you. Please package well. Use mailing boxes for film, as envelopes do not fair well. We can provide convenient ordering forms.



Shipping from the Lab to You

Unless requested otherwise, all orders leaving the lab will be sent UPS ground service. Some smaller orders may be shipped by US mail. All UPS orders will be charged a flat rate of \$12.00 for shipping and handling. Oversize packages as well as orders shipped to an APO, FPO address, or Hawaii or Alaska, will incur additional charges. Special requests for overnight, air or other services (Federal Express, Airborne) will be billed at actual shipping rate. COD orders will be charged \$15.00 in addition to shipping.

Limitation of Liability

Submitting any tangible or electronic media, image, data, file, card, disc, device, film, print, slide or negative for any purpose, such as processing, printing, duplication, alteration, enlargement, storage, transmission, or other handling constitutes an AGREEMENT that any loss or damage to it by our company, Darkroom Imaging, subsidiary or agents, even though by our negligence or other fault, will entitle you to replacement with an equivalent quantity/size of unexposed photographic film or electronic media, and processing of the replacement media. Except for such replacement, our acceptance of the media, image, data, file, card, disc, device, film, print, slide or negative is without other liability, and recovery for any incidental or consequential damages is excluded. No express or implied warranty is provided.

Remakes

In the event a remake is necessary, we require that the remake order be returned within one week of receipt of the order along with the original work order, envelope and instructions. Detailed instructions for remakes are required. Charges for remakes will be made at our discretion with fairness in mind.

Payment Methods

Darkroom Imaging accepts MasterCard, Visa, American Express and Discover cards. Money orders or bank checks are preferred. If sending a personal check with a first time order, expect up to a 10-day delay in processing your order while the check clears. After your initial order, personal checks will be accepted without delays. We do not provide open accounts.



Match Guide Print:

We will do our best to match your guide print if it was printed on professional paper by a professional lab. If it was printed on a mini-lab or ink jet we will print to professional standards, while following the intent of your guide print . When ordering digital services, prints may not match an optical guide print.

Products:

As a full service photo lab, we provide color and B&W film processing, digital printing, package printing and custom photo work. We use professional type photographic paper. Type P paper produces a longer tonal range than the paper used by mini-labs. It has less contrast and gives more detail in both highlight and shadow areas. Fuji has established a 100 year life for their professional paper, 200 years in dark storage. Wedding dresses show more detail; flesh tones are more smooth and real. Harsh tones are kept to a minimum. The type P Luster papers have a copyright notice imprinted on the back.

We use Fuji Pro Crystal Archive paper for color and B&W work. We reserve the right to substitute paper brands and types as the need occurs.

Prices:

Prices are current and reflect our commitment to quality at an affordable cost. We are not responsible for printing errors. Prices can be changed without prior notice.

FILM PROCESSING



**PUSH-PULL PROCESSING
ADD 100%**

Film Size	B & W	Color	
135 x 12 exp.	N/A	\$ 2.25	
135 x 24	\$ 3.50	\$ 3.00	
135 x 36	\$ 4.50	\$ 4.00	
120	\$ 4.50	\$ 4.00	
220	\$ 9.00	\$ 8.00	
APS/110		\$6.00	
4 x 5	\$ 2.50	\$ 1.75	
8 x 10	7.00	\$ 6.00	

REPRINTS FROM FILM

SIZE	1 Print	2-10		
wallets	\$.78	\$.65		
3.5 x 5	\$ 1.09	\$.79		
4 x 5	\$ 1.09	\$.79		
5 x 5	\$ 1.35	\$.79		
5 x 7	\$ 2.00	\$ 1.90		
8 x 10	\$ 3.95	\$ 3.40		
8 x 12	\$ 4.65	\$ 4.10		
10 x 10	\$ 5.25	\$ 4.72		
11 x 14	\$ 9.75	\$ 8.75		
16x20	\$ 20.00	\$ 18.00		
20x24	\$ 30.00	\$ 27.00		
20x30	\$ 38.00	\$ 35.00		
24x30	\$ 45.00	\$ 40.00		
30x40	\$ 69.00	\$ 60.00		

**Proofs from film at the time of film
processing**

3.5x5	\$.37
4x5	.43
4x6	.45
5x5	.48
5x7	1.09

DIGITAL PROOFS

From image files



We provide two levels of printing proofs from your camera files, deluxe and economy. The deluxe proofs are color and density corrected by us. Please keep your file numbers / names short and simple with no symbol characters (!@#\$%^&*()+=<>?{}). Tiff or Jpg format only. For those who have a calibrated monitor you can use the economy proofs. We print them as you sent them to us. Sorry no remakes on these.

All proofing orders include a index card.

SIZE	DELUXE	ECONOMY
3.5x5	\$.35	\$.21
4x5	\$.39	\$.22
4x6	\$.39	\$.23
5x5	\$.39	\$.23
5x7	\$1.00	\$.75

PERSONALIZED GREETING CARDS

	1-25	26-100	100+
3.5X7	\$.45	\$.35	\$.23
4X8	.54	.45	.39
5X7	1.25	.85	.68

Set up charge of \$3.00 for picture insertion and 2 lines of personalized text..

See or download our greeting card page for designs available.

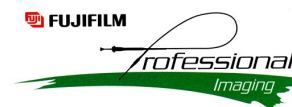
If you have designed your own, you can disregard the set up charge Envelopes included.

DIGITAL PRINTING

High quality prints direct from your digital file. **All images are color and density corrected** unless you specify otherwise. We print on Fuji Crystal Archive RA4 papers. Your choice of glossy, matte, pearl (metallic), canvas or luster finish. Only the Luster E surface has a copyright notice imprinted on the back. We can print any size from mini-wallet to 30x90. Larger sizes can be tiled.

FILE PREPARATION:

- ◆ Images may be submitted by uploading to our site using FTP or LabPrints or on a CD or DVD.
- ◆ Files should be RGB TIFF, JPEG, or PDF, with no compression (LZW).
- ◆ All files, for optimum quality, should be **300 PPI** and sized for the **largest** print ordered.
- ◆ B&W– Use RGB or grayscale.
- ◆ No layers, extra channels, or paths.
- ◆ If aspect ratio is important and you are ordering different ratios, i.e. 8x10 and 5x7, please submit a file for each ratio.
- ◆ keep file names short and no symbol characters.



Images larger than 30x90 Figure cost as \$.045 per square inch. We print 30 inches wide by any length.

Archive images to CD \$3.00

size	price
Mini wallets	0.15
wallet	0.30
3.5x5	0.39
3.5x7	0.45
4x5	0.39
4x6	0.39
4x8	0.51
5x5	0.39
5x7	1.25
5x8	1.35
5x10	1.40
5x30	7.00
6x8	1.35
8x8	1.70
7x10	2.00
8x10	2.50
8x12	2.75
10x10	4.50

10x12	4.25
10x13	6.00
10x14	6.00
10x20	10.00
11x14	6.50
11x17	6.75
12x12	7.00
12x24	10.00
16x16	12.00
16x20	15.00
16x24	18.00
20x20	19.00
20x24	20.00
24x24	24.00
20x30	26.00
24x30	30.00
24x36	36.00
30x30	42.00
30x40	51.00
30x90	108.00

FUJI PEARL METALLIC & CANVAS PAPER

SIZE		Digital
5X7		1.50
8X10		3.00
8x12		3.50
11X14		9.00
16X20		21.00
20X24		28.00
20X30		34.00
24X30		40.00
24x36		48.00
30X40		65.00

Fuji Pearl metallic pro paper is a color RA4 paper that features a unique metallic undertone and a super glossy surface. Metallic paper produces brilliant colors with an eye-catching metallic sheen. It is well suited for glamour, wedding, prom & sports photography. Its commercial applications for point of purchase displays and product photography is limitless. Two price schedules, one for prints from negatives and one for prints from digital files.

SPECIALTY ITEMS

TRADER CARDS

Set of 8—single sided	\$2.00
Set of 8—2 sided	4.25
Set of 12 —single sided	3.00
Set of 12 - 2 sided	6.40
Self adhesive backs	0.15 each
Self adhesive back-sheet of 8	1.00

We will print the player information on the card backs if we are supplied with that information. Self adhesive backs are do it yourself.

You can pick any card front and back combination. We can change the color of the trader cards if requested.

PRICES FOR LAB DESIGNED ITEMS

Normal digital prices for customer designed magazine, memory mates, etc.

CALENDARS	5X7	\$ 1.50
CALENDARS	8x10	3.00
MEMORY MATES	8x10	3.00
BUTTONS	3"	2.00
MAGAZINE COVERS		3.00
LAMINATED PHOTO ID'S		1.75
LAMINATED LUGGAGE TAGS		1.75
PHOTO MAGNETS		1.50
PHOTO KEY CHAIN		1.50

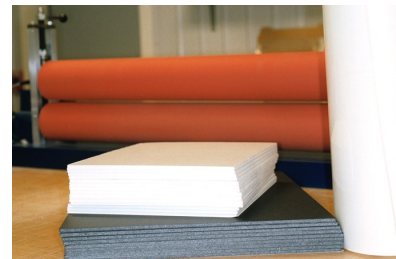
We can compile units and package each order in a 9x12 window envelope: \$.50 each package

MOUNTING

We can mount your photos on the following materials:

- ♦ 3/16 Premium Foamcore
- ♦ 3/16 Styrene faced Foamcore
- ♦ 1/2 Foamcore
- ♦ 80 point plastic (styrene) mount

3/4 & 1 1/2 Stand-Out Mount



Our new addition to our line of mounting materials is a very strong foamcore material that is faced on both sides with a .30 thick styrene facer. This provides a strong and smooth surface for mounting. This material is warp and dent resistant. It is heavier than our premium foamcore.

Size	Styrene faced foamcore	Foamcore or .080 Styrene	1/2 inch Foamcore	
up to 8x10	n/a	\$4.00	\$6.00	
11x14	\$7.50	6.50	9.00	
16x20	12.00	10.00	13.00	
20x24	16.00	14.00	17.00	
24x30	23.00	20.00	22.00	
30x40	35.00	33.00	34.00	

Non standard sizes will be charged for the next available standard size. As an example a 12x18 mount will be billed as a 16x20.

SPORTS-EVENTS-PROMS

BUTTONS-MAGNETS-KEY CHAINS-CALENDARS

For sports events, proms, gifts and promotions of all kinds.

Price includes design and Layout

3" metal buttons with clasp	\$2.00 each including photo
2X3 Photo magnet	1.50 each
2X3 Key Chain	1.50 each
5x7 Calendars	1.25 each
8x10 calendars	3.00 each
8X10 Magazine Cover	3.00 each
8x10 Memory Mate	3.00 each

*Normal digital prices apply for self designed magazine covers , memory mates, calendars.



TRADER CARDS

Set of 8—single sided	\$2.00
Set of 8—2 sided	4.25
Set of 12 —single sided	3.00
Set of 12 - 2 sided	6.50
Self adhesive backs	0.10 each
Self adhesive back-sheet of 8	1.00

We will print the player information on the card backs if we are supplied with that information. Self adhesive backs are do it yourself.

You can pick any card front and back combination. We can change the color of the trader cards if requested.

We can compile units and package each order in a 9x12 window envelope: \$.50 each package



SCANNING SERVICES

We scan with the world renown *Durst Sigma Plus* long roll scanner. Quality dust free scans at an affordable price.

ROLL FILM SCANNING

Does not include film processing

Burn to CD.....\$3.00

Burn to DVD..... \$5.00

FILM SIZE	STANDARD 10 MB	HI-RES 30 MB
35 mm	.39	1.00
120 / 220	.45	1.50

All scans will be returned on a CD as a JPEG or TIFF file. Large format negs will be scanned as 8x10 or 10x10 size, 300 ppi, 35mm as 8x12 size. Tell us what you need, we'll scan it. All scans (except B&W) are with *Digital ICE* enhancement for dust free files.

CUT FILM SCANS

standard cut film scan \$1.75
Hi-res scan (30mb +) 3.00
Hi res scan (100mb+) 15.00

Price includes Archiving to CD.

GLASS PLATES:

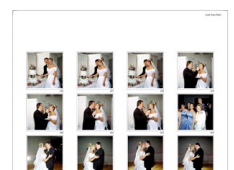
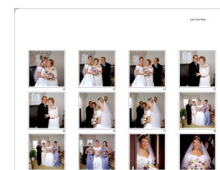
4X5—5X7 \$3.00 EACH
8X10-11X14 \$6.00EACH

FLAT BED SCANS:

Up to 8x10 \$3.00
11x17 6.00
Large pictures 6.00 per section-
includes digital stitching

PROOF PAGES

	8x10
From Film Roll Scans	\$6.00
From Digital files	\$6.00



After scanning we can print your rolls as proof pages. Depending on your film format each page will have 4, 6, 9, 12, or 15 images per page. 8x10 will be vertical format.



LabPrints



Darkroom Web FTP

2 Digital Workflow Solutions
FREE downloads

We have found both **Lab Prints** and *our own Web FTP* software to be easy to use and reliable. They will save you time and mistakes. They are for both the digital and film photographer. With LabPrints, you can quickly edit and organize your photo shoot, crop images, and place the lab order all from one program. It is not necessary to convert your JPEG's to TIF or to resize. It is assumed that you will be using a resolution that is adequate for the largest size to be ordered.

Download LabPrints from our web site and set it up as instructed. Our FTP site is well suited for large files of standard and non standard sizes. You can upload a single file or a folder of files. We also have a online gallery for you to display and sell your wedding, sports, or dance events. All this using the Lab Prints editing software.

As a Partner Lab we can take your uploaded picture files and print them as you have specified. Just order, crop, and correct them in either one of our workflow programs and they will upload automatically to our web site, or send us a CD containing your files. All the instructions we need will be on that upload or CD. We will print your files as specified. You can color correct your files or have us. It is suggested that you crop and edit your files and have us color correct them. This is what we do best.

All sizes in our package schedule are available for digital output. If you need a special size just let us know. We can print any size or flavor, ie color, B&W, sepia, etc. We will work with you to provide the best quality at the best price.

If things don't look right we will notify you and work out a solution with you.

Darkroom Imaging web upload

Fast, simple, and secure!!

For those of you who are used to using photo shop or similar image editing program and have your image properly sized and cropped you can upload the files to us on our FTP site. Just go to our web site and click on "order upload". Sign up for a web account and follow the on screen instructions. Its just a matter of highlighting your file or folder selection and clicking on a arrow. Your images will be on their way to our lab.

ONLINE STOREFRONT & GALLERY

We now offer a online service for displaying and selling your images. We have a complete system for organizing and selling your wedding, prom, portrait, or sports shoots. By teaming up with LabPrints Software we have the best, most complete system. We have even taken it one step further by offering a complete turnkey package for the occasional events shooter or the busy 24/7 photographer.

Lab Prints has provided photographers with a Photo Gallery shopping cart ordering package that is cost effective and simple. You can download the free software from our site or their site, www.labprints.com.

For \$30.00 per month Lab Prints will host your Photo Gallery. You can set all the parameters and enjoy the benefits of the internet. Your customer's orders will be sent directly to our servers to be printed and shipped. We can ship directly to your customer or to you. This system has been estimated to save as much as 80% of your time per post wedding processing. You will be able to set your own prices and have everything copy and password protected.

For those who are too busy to tend to a web site, don't have broadband, or who occasionally would use this service, we will take care of all the uploading, downloading, and printing, shipping, e-commerce, and send you a monthly check. All you have to do is provide us with the photos, film or digital files. You can choose to do as many of the process steps as you wish, or let us do it all. Call us for details. 800-566-9504.

- ◆ Digital camera files should be edited by the photographer and uploaded to us. We will color correct and load to web.
- ◆ Film will be processed, scanned, and uploaded to web (see process and scan prices).
- ◆ Online images can be viewed and purchased by your customers.
- ◆ Prices are set by you.
- ◆ All events can be password protected.
- ◆ All online images can be copy protected.
- ◆ Free on line storage for 90 days.
- ◆ All film scans can print up to 8x10. Larger sizes need to be rescanned.

PHOTO BOOKS

We have photo books that are made in house with RA4 photo paper. There are many uses for the books depending on the intent and page layout. Some of the uses are for showing proofs, portfolios, catalogs, events, vacations, and weddings. Either we can design the pages or you can send us your pre designed ones. As long as the pages are in a standard size we can bind it in a hardcover. The 5x7 books have a 19 page limit and the other sizes have a 30 page limit.

Size	Binding + Cover	Each page Customer designed		Each Page Lab Custom designed
5x7	\$8.00	\$1.25		\$2.50
8x10	10.00	2.50		\$3.50
8.5x11.5	\$10.00	\$3.00		\$4.00
12x12	\$12.00	\$7.00		\$9.00

Custom gold lettering on book cover is \$3.00. Limit of 2 lines of text approx 2.5 inches long.

The pages for all the Books are the full size stated, ie a 5x7 is a 5x7. Custom designed pages may incur an additional charge. All page sizes should have a minimum 1/2 inch border to allow for binding. Book covers are available in black and have a simulated leather finish.



DIGITAL RETOUCHING

BASIC RETOUCHING:

Removal of light acne, lighten bags
under eyes, soften facial line \$ 7.00

Teeth whitening \$ 4.00

Eye enhancement 9.00

Open eyes-per eye 15.00

Remove stray hairs 5.00

Remove major acne 12.00

Glass Glare/per eye 9.00

Rebuild eye 15.00

Remove braces 15.00

Remove background 15.00+

Switch heads 15.00

Critical color match 15.00

SPECIAL SERVICES:

Archive to CD \$ 1.00

Archive to DVD 5.00

Convert from PDF file .50

Create Group Composite minimum 35.00

(\$1.00 per person when more than 30)

School records CD 10.00

Add text to print per line 3.00

Art work, layout, restoration, etc. will be quoted
on a per job basis.

There is an hourly rate of \$60.00/hour

STANDOUT MOUNTS

Eliminate the need for Framing



SIZE	3/4 inch	1-1/2 inch
8x12	\$16.00	\$29.00
11x14	19.00	36.00
16x20	25.00	45.00
16x24	30.00	54.00
20x20	37.00	60.00
20x24	39.00	68.00
30x40	101.00	150.00

A standout mount is a high end light weight mounting substrate designed to deliver added depth in all mounting applications. It is available in 3/4" and 1-1/2" thickness with a durable edge banded finish available in white or black. The front and back faces are composed of .30 styrene. The back is pre-drilled for mounting purposes.

It is available only in the standard sizes shown. The price does not include the print.

Available options at additional cost are print spraying in matte or luster spray and lamination with gloss, matte, or canvas finish.

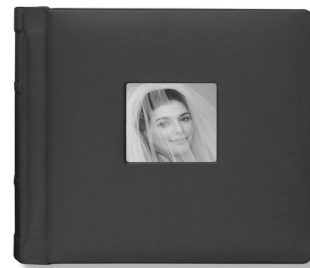


WEDDING ALBUMS

You can have us assemble your customers album. Once your customer has picked out their photos and have decided on the album arrangement you can either design the pages yourself by using Lab Prints Image ordering software, Photo Shop or other software. Or you can have us design the pages. Once the pages are designed we will send you a low res image of each page for approval. Once approved we can then complete the final printing and assembly.

We use **Valencia** albums. They are a library bound simulated leather album, with or without a window in black or ivory. The album has a padded cover option in the 10x10 size. Available color, size, window combinations vary, call for conformation. Each page has metal corner protectors and holds two prints. They come in 10, 15, and 20 pages, sized in 8x8, 8x10, and 10x10. The Valencia is a nice high end album that your bride & groom will be proud to have for their memories.

SIZE	PAGES	PHOTOGRAPHER DESIGNED	PHOTO LAB DESIGNED
8x8	10	145.00	205.00
8x8	15	176.00	266.00
8x8	20	207.00	327.00
8X10	10	159.00	219.00
8X10	15	193.00	283.00
8X10	20	227.00	347.00
10x10	10	195.00	255.00
10x10	15	244.00	334.00
10x10	20	293.00	413.00



Finished album includes a storage box. Please allow up to 2 weeks for processing depending on time of year and scheduling.

Add \$3.00 for cover window and \$9.00 for padded album cover.

Name imprint on front cover:
\$7.00 per line, 2 line maximum



Retouching, or art work
incurs extra charges.

SUPERIOR ALBUM

Simple elegant looking flush mount album in black or brown leatherette. Each photo is positioned 1/16 inch from the page edges to protect the corners. Pages are approximately 2mm thick. Price includes album, pages, prints, and assembly. Gold embossed imprinting is available. Design your own pages or have us do it.

SIZE ORIENTATION	PAGES/SIDES	PHOTOGRAPHER DESIGNED	LAB CUSTOM DESIGNED
4X5 V	5 / 10	\$46.00	\$66.00
4X5 V	10/20	60.00	100.00
4X5 V	15/30	80.00	140.00
4X6 VH	5/10	46.00	66.00
4X6 VH	10/20	60.00	100.00
4X6 VH	15/30	80.00	140.00
5X7 V	5/10	55.00	75.00
5X7 VH	10/20	78.00	118.00
5X7V	15/30	102.00	162.00
5X5	5/10	46.00	66.00
5X5	10/20	60.00	100.00
5X5	15/30	80.00	140.00
8X8	5/10	73.00	113.00
8X8	10/20	106.00	186.00
8X8	15/30	145.00	265.00
8X10 VH	5/10	79.00	119.00
8X10 VH	10/20	116.00	196.00
8X10 VH	15/30	157.00	277.00
10X10	5/10	96.00	136.00
10X10	10/20	144.00	224.00
10X10	15/30	198.00	318.00
10X13 V	5/10	127.00	167.00
10X13 V	10/20	196.00	276.00
10X13 V	15/30	269.00	389.00

Gold lettering on front cover.
\$6.00 per line.
2 lines maximum.

